



THANK YOU
FOR ATTENDING
SEE YOU NEXT YEAR
IN CHICAGO
APRIL 8 - 11, 2016

THANK YOU
FOR ATTENDING
SEE YOU NEXT YEAR
IN CHICAGO
APRIL 8 - 11, 2016

MODE
2016

B 402

B 401

Student ID
Name: [Name]
[Other details]

Student ID
Name: [Name]
[Other details]

Student ID
Name: [Name]
[Other details]

Student ID
Name: [Name]
[Other details]

Student ID
Name: [Name]
[Other details]



THANK YOU
FOR ATTENDING

SEE YOU NEXT YEAR
IN CHICAGO
APRIL 8 - 11

FOR ATTENDING
SEE YOU NEXT YEAR
IN CHICAGO
APRIL 8 - 11, 2018

MODEX 2017

B 402

B 401

CHICAGO
CUBAN
MAYOR ESTRELLA
@STUDENT-VIP

CHICAGO
CUBAN
MAYOR ESTRELLA
@STUDENT-VIP



THANK YOU
FOR ATTENDING
PROMAT 2019
SEE YOU NEXT YEAR
IN CHICAGO
APRIL 9 - 11, 2019

MODEX 2019

B 402

B 401

FOR ATTENDING
SEE YOU NEXT YEAR
IN CHICAGO
APRIL 9 - 11, 2019

NAME
TITLE
UNIVERSITY
ATTENDING
STUDENT VIP

NAME
TITLE
UNIVERSITY
ATTENDING
STUDENT VIP



THANK YOU
FOR ATTENDING

SEE YOU NEXT YEAR
IN CHICAGO

B 402

B 401

MODE

THANK YOU
FOR ATTENDING

SEE YOU NEXT YEAR
IN CHICAGO

PROMAT



THANK YOU
FOR ATTENDING

SEE YOU NEXT YEAR
IN CHICAGO

B 402

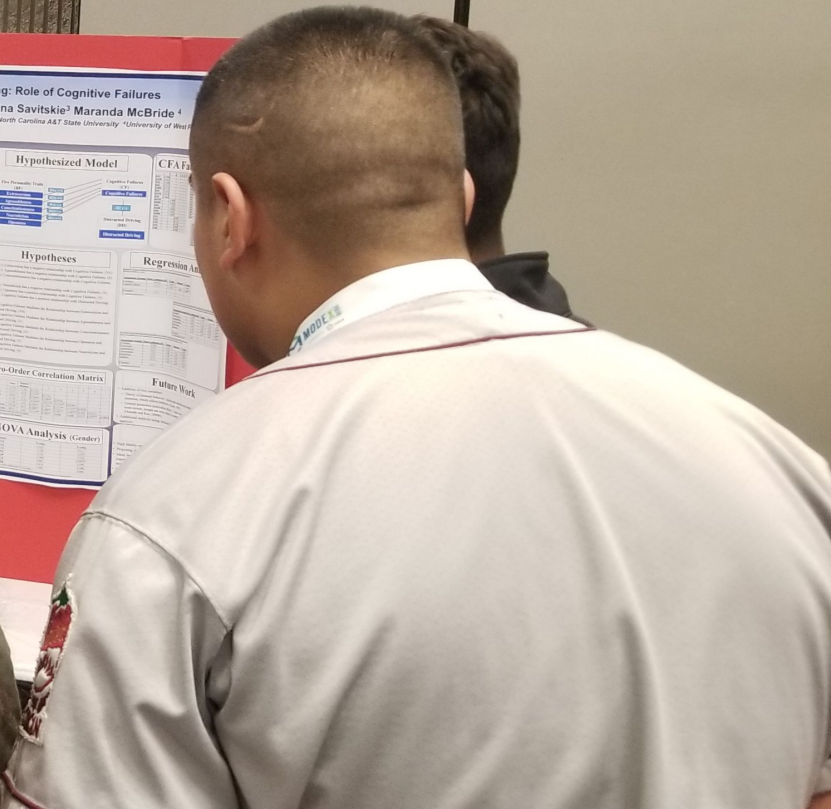
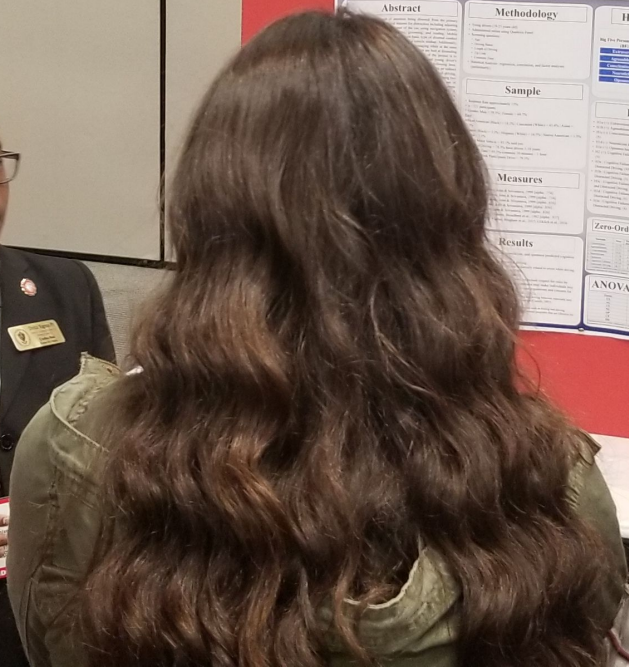
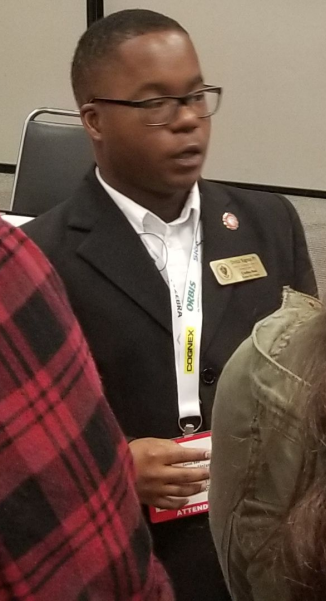
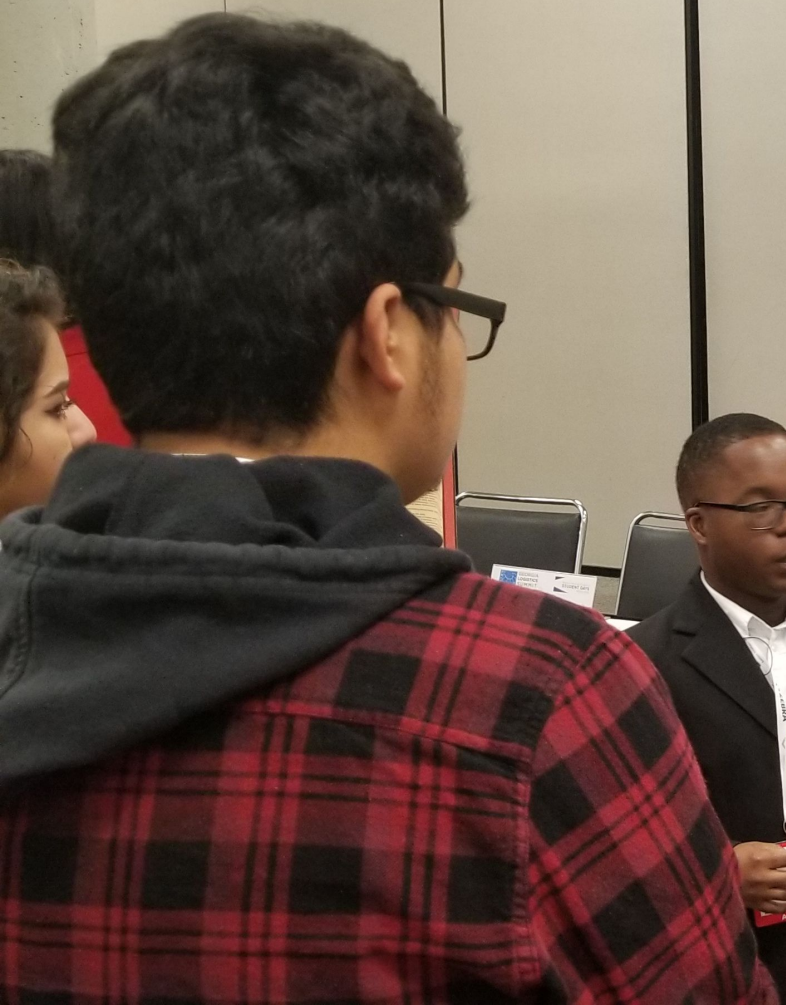
B 401

MODE

THANK YOU
FOR ATTENDING

SEE YOU NEXT YEAR
IN CHICAGO

MODE



Antecedents of Distracted Driving: Role of Cognitive Failures
Corliss Best¹ Suman Niranjani² Katrina Savitskie³ Maranda McBride⁴

¹College of Business Administration - Savannah State University ²North Carolina A&T State University ³University of West

Abstract

Methodology

Hypothesized Model

CFAs

Sample

Hypotheses

Regression Analysis

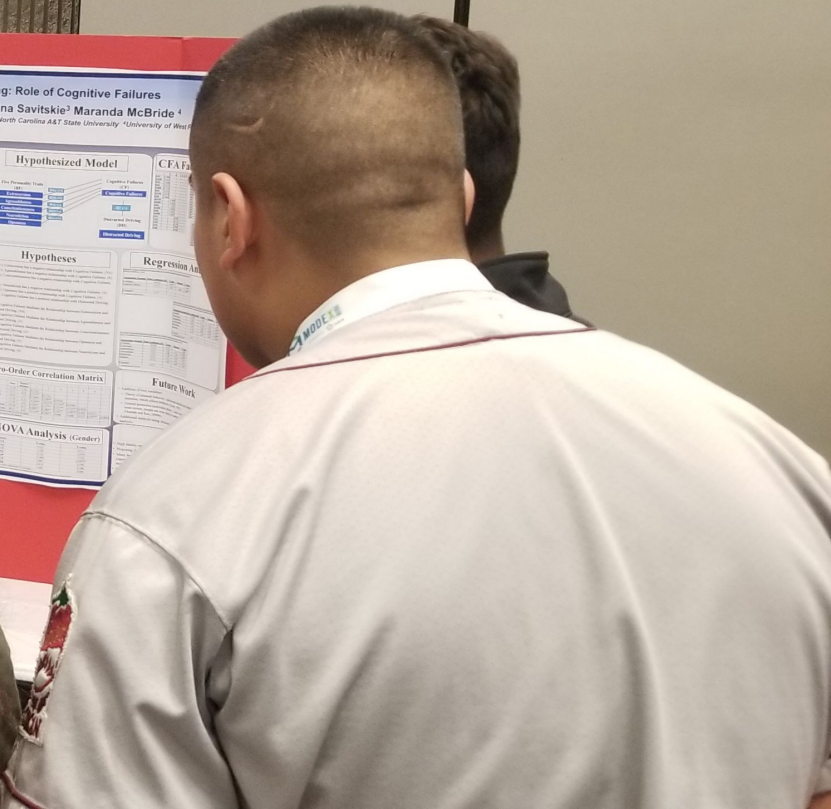
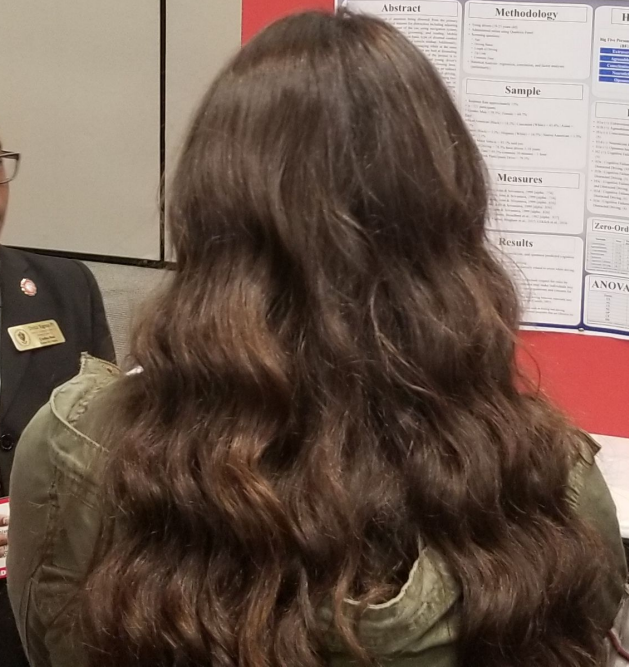
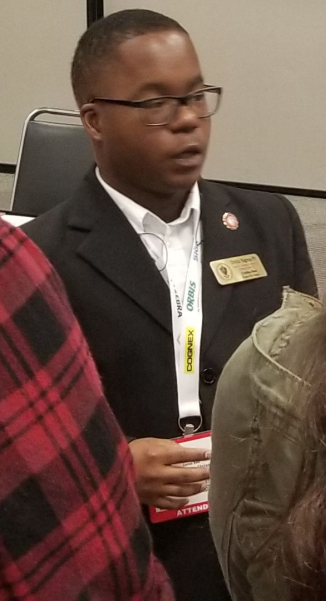
Measures

Results

Zero-Order Correlation Matrix

Future Work

ANOVA Analysis (gender)



Antecedents of Distracted Driving: Role of Cognitive Failures
Corliss Best¹ Suman Niranjani² Katrina Savitskie³ Maranda McBride⁴

¹College of Business Administration - Savannah State University ²North Carolina A&T State University ³University of West Georgia

Abstract

Methodology

Hypothesized Model

CFAs

Sample

Hypotheses

Regression Analysis

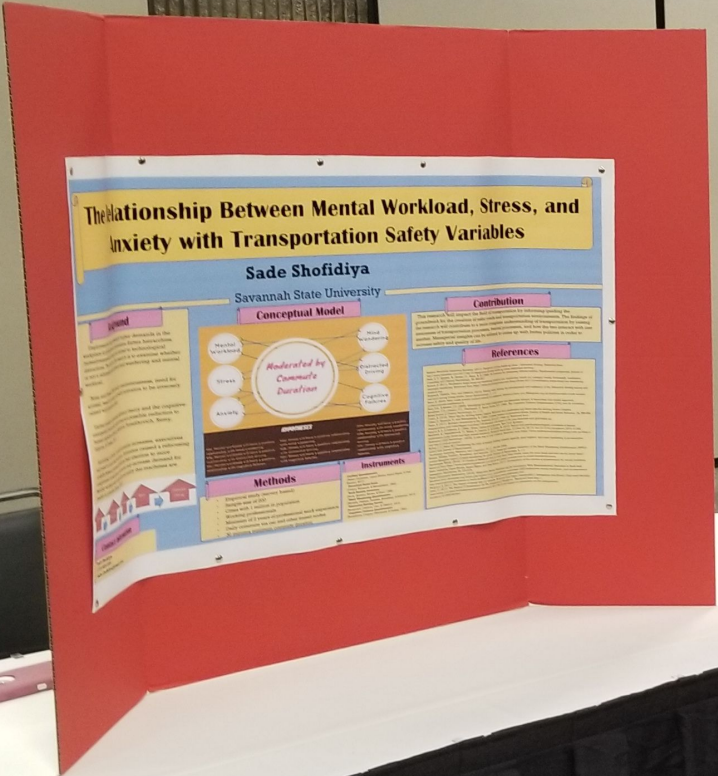
Measures

Results

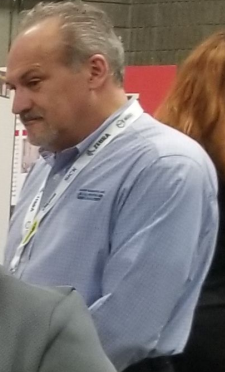
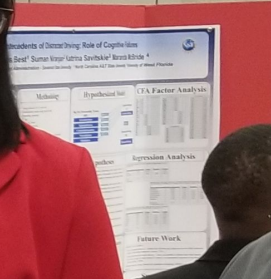
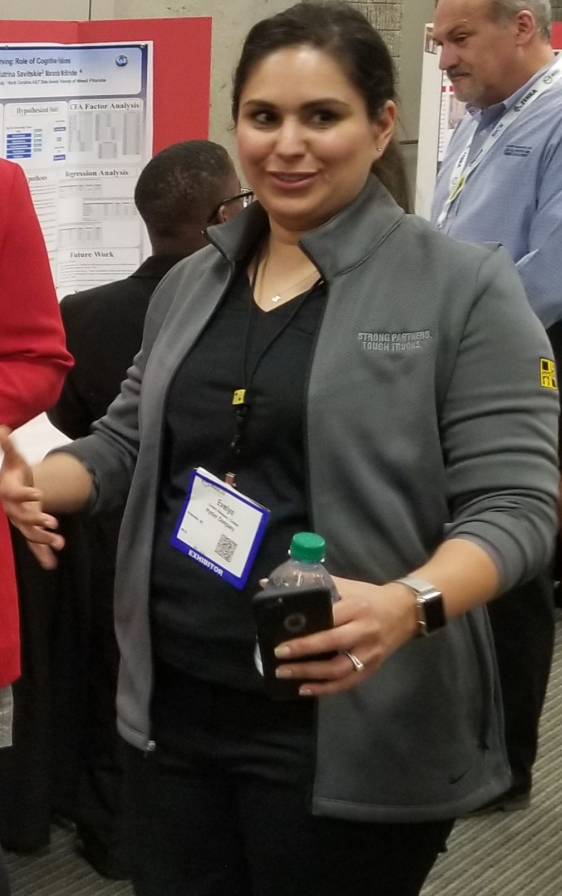
Zero-Order Correlation Matrix

Future Work

ANOVA Analysis (gender)



12





EXIT

1884 SAVANNAH STATE UNIVERSITY

MARTA Transit Use Between Low and High Income Households

Sarah Dilard
Undergraduate Student
Geographical Information Systems (GIS)
Department of Engineering, Technology, Research and Innovation, Savannah State University, GA

Introduction:
The purpose of this study was to analyze the relationship between household income and MARTA transit use in Savannah, Georgia. The study was conducted using GIS and household survey data. The results show that there is a significant positive correlation between household income and MARTA transit use.

Methodology:
Identify and Research Subject of Interest
↓
Develop Problem Statement
↓
Narrow to Specific Analysis

Data:

Figure 1: Map of Savannah, Georgia, showing the location of the study area.

Figure 2: Map of Savannah, Georgia, showing the location of the study area.

Figure 3: Map of Savannah, Georgia, showing the location of the study area.



GEORGIA LOGISTICS SUMMIT

STUDENT DAYS

9



THANK YOU
FOR ATTENDING
PROMAT 2016
SEE YOU NEXT YEAR
IN CHICAGO
APRIL 8 - 11, 2016

THANK YOU
FOR ATTENDING
PROMAT 2016
SEE YOU NEXT YEAR
IN CHICAGO
APRIL 8 - 11, 2016

MODE 2016

B 402

B 401

Student ID
Name: [unreadable]
[unreadable]

Student ID
Name: [unreadable]
[unreadable]

Student ID
Name: [unreadable]
[unreadable]
STUDENT VIP